



## ***A Hug for Snicker*** ©

by

Laura Wilson-Martos & Jennifer Fleury  
[www.knottygirls.com/JenLa.blog](http://www.knottygirls.com/JenLa.blog)

*Using hugs and kisses cable patterns to border alternating cat's face lace (Jen's original design) and cat's paw lace, we've created a scarf to celebrate all those wonderful things that make our cats the adored and treasured creatures they are.*

- Yarn:** Cascade 220: 3 Balls  
Yardage for substitute worsted-weight yarn: approximately 500 yards
- Needles:** US size 7 [4.50 mm]
- Gauge:** 18sts/26 rows = 4" stockinette stitch
- Glossary:** See page 3 "Legend" for glossary of terms

### **Instructions:**

- Cast on 37 stitches
- Knit rows 1-36 once (**see next page for cable stitch detail**)
- Repeat rows 5-36, six more times, or until piece measures approximately 36 inches, ending with row 36
- Knit row 5 once more
- Place stitches on holder
- Repeat for the second side
- Graft sides together to complete scarf.



**Pattern:**

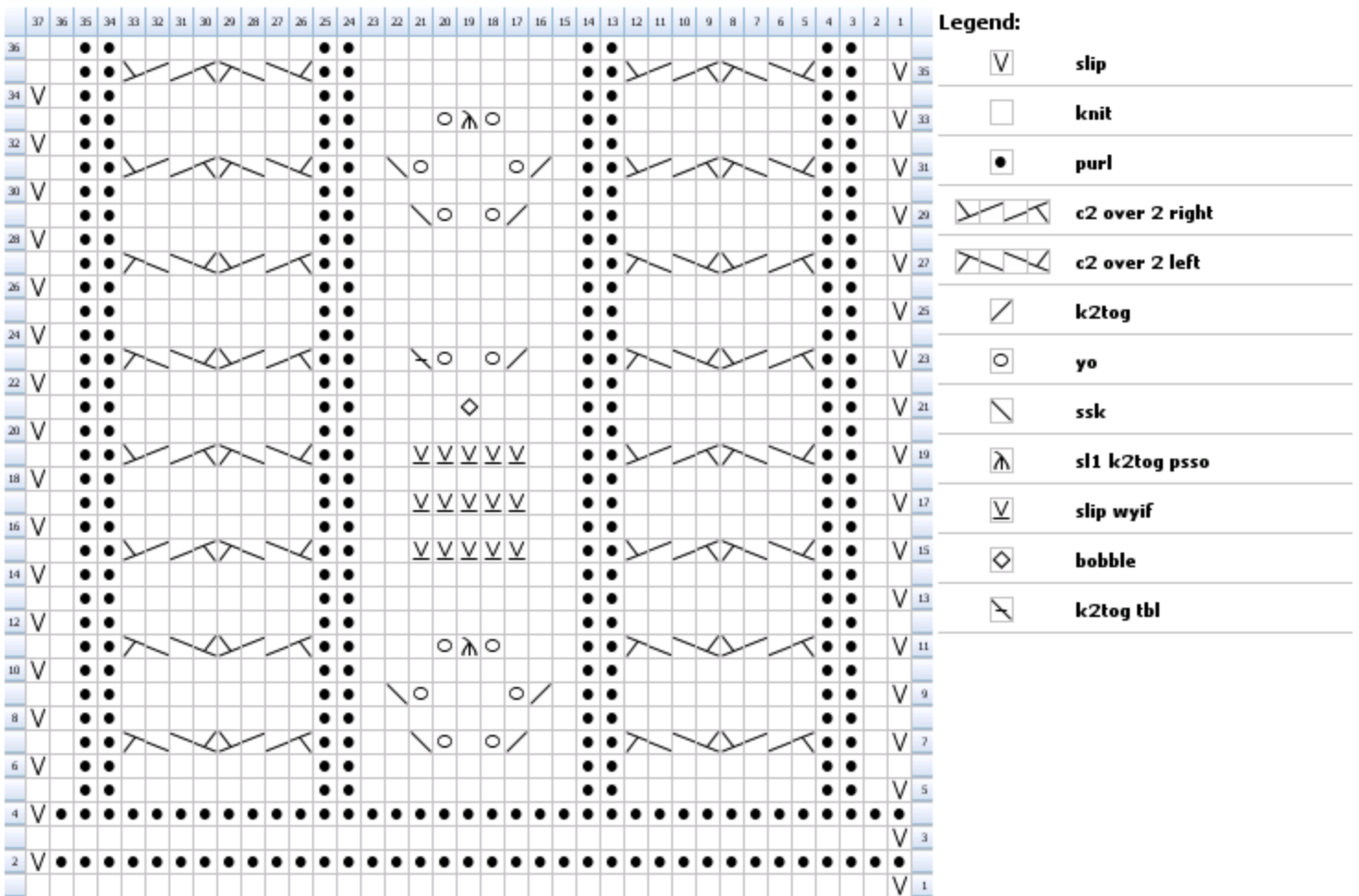
R1 (RS): sl, k36  
 R2 (WS): sl wyif, k36  
 R3: sl, k36  
 R4: sl wyif, k36  
 R5: sl, k1, p2, k8, p2, k9, p2, k8, p2, k2  
 R6: sl wyif, p1, k2, p8, k2, p9, k2, p8, k2, p2  
 R7: sl, k1, p2, c2 over 2 right, c2 over 2 left, p2, k2, k2tog, yo, k1, yo, ssk, k2, p2, c2 over 2 right, c2 over 2 left, p2, k2  
 R8: sl wyif, p1, k2, p8, k2, p9, k2, p8, k2, p2  
 R9: sl, k1, p2, k8, p2, k1, k2tog, yo, k3, yo, ssk, k1, p2, k8, p2, k2  
 R10: sl wyif, p1, k2, p8, k2, p9, k2, p8, k2, p2  
 R11: sl, k1, p2, c2 over 2 right, c2 over 2 left, p2, k3, yo, sl1 k2tog pssso, yo, k3, p2, c2 over 2 right, c2 over 2 left, p2, k2  
 R12: sl wyif, p1, k2, p8, k2, p9, k2, p8, k2, p2  
 R13: sl, k1, p2, k8, p2, k9, p2, k8, p2, k2  
 R14: sl wyif, p1, k2, p8, k2, p9, k2, p8, k2, p2  
 R15: sl, k1, p2, c2 over 2 left, c2 over 2 right, p2, k2, (sl wyif) 5 times, k2, p2, c2 over 2 left, c2 over 2 right, p2, k2  
 R16: sl wyif, p1, k2, p8, k2, p9, k2, p8, k2, p2  
 R17: sl, k1, p2, k8, p2, k2, (sl wyif) 5 times, k2, p2, k8, p2, k2  
 R18: sl wyif, p1, k2, p8, k2, p9, k2, p8, k2, p2  
 R19: sl, k1, p2, c2 over 2 left, c2 over 2 right, p2, k2, (sl wyif) 5 times, k2, p2, c2 over 2 left, c2 over 2 right, p2, k2  
 R20: sl wyif, p1, k2, p8, k2, p9, k2, p8, k2, p2  
 R21: sl, k1, p2, k8, p2, k4, bobble, k4, p2, k8, p2, k2  
 R22: sl wyif, p1, k2, p8, k2, p9, k2, p8, k2, p2  
 R23: sl, k1, p2, c2 over 2 right, c2 over 2 left, p2, k2, k2tog, yo, k1, yo, k2togb, k2, p2, c2 over 2 right, c2 over 2 left, p2, k2  
 R24: sl wyif, p1, k2, p8, k2, p9, k2, p8, k2, p2  
 R25: sl, k1, p2, k8, p2, k9, p2, k8, p2, k2  
 R26: sl wyif, p1, k2, p8, k2, p9, k2, p8, k2, p2  
 R27: sl, k1, p2, c2 over 2 right, c2 over 2 left, p2, k9, p2, c2 over 2 right, c2 over 2 left, p2, k2  
 R28: sl wyif, p1, k2, p8, k2, p9, k2, p8, k2, p2  
 R29: sl, k1, p2, k8, p2, k2, k2tog, yo, k1, yo, ssk, k2, p2, k8, p2, k2  
 R30: sl wyif, p1, k2, p8, k2, p9, k2, p8, k2, p2  
 R31: sl, k1, p2, c2 over 2 left, c2 over 2 right, p2, k1, k2tog, yo, k3, yo, ssk, k1, p2, c2 over 2 left, c2 over 2 right, p2, k2  
 R32: sl wyif, p1, k2, p8, k2, p9, k2, p8, k2, p2  
 R33: sl, k1, p2, k8, p2, k3, yo, sl1 k2tog pssso, yo, k3, p2, k8, p2, k2  
 R34: sl wyif, p1, k2, p8, k2, p9, k2, p8, k2, p2  
 R35: sl, k1, p2, c2 over 2 left, c2 over 2 right, p2, k9, p2, c2 over 2 left, c2 over 2 right, p2, k2  
 R36: p2, k2, p8, k2, p9, k2, p8, k2, p2

**~Special Note ~**

The “Bobble in the Cat’s Face Lace (Row 21) is not worked as an actual bobble. The row is worked as follows:

**K4, slip right needle under 3 strands made on rows 15, 17 and 19, from bottom to top, then knit next stitch on needle, bringing the caught yarn back though the strands THEN slipping the stitch of the LH needle, K4**

- The cable stitches are to be worked as follows:
  - **c2 over 2 left** – sl 2 to CN, hold in front, k2, k2 from CN
  - **c2 over 2 right** – sl 2 to CN, hold in back,

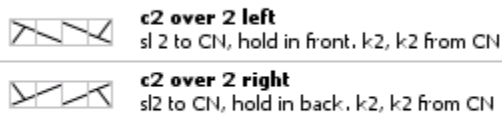


Created in Knit Visualizer (www.knitfoundry.com)

~Special Note~

- The “Bobble in the Cat’s Face Lace (Row 21) is not worked as an actual bobble. The lace section of that row is worked as follows:  
**K4, slip right needle under 3 strands made on rows 15, 17 and 19, from bottom to top, then knit next stitch on needle, bringing the caught yarn back though the strands THEN slipping the stitch of the LH needle, K4**
- The cable stitches are to be worked as follows:

Legend:



Created in Knit Visualizer (www.knitfoundry.com)