

Ears of Grain Washcloth



Yarn: Lily "Sugar 'n Cream" 100% worsted weight cotton; color show: #00010 "Yellow"
Any 100% worsted weight cotton should work for this project.

Needles: US #6 (4.0mm) or size needed to obtain gauge

Gauge: 5 stitches and 7 rows per inch

Note: This needle size and gauge produced a cloth that was approximately 7.5" x 7.5" (19cm x 19cm).

I have written out the pattern in its entirety. A full chart can be found on the final page of the pattern. The cloth can be lengthened by adding additional lace repeats. Rows 7-16 contain one full repeat.

CO 36

Row 1: k36

Row 2: k36

Row 3: k36

Row 4: k36

Row 5 (RS): k17, p2, k17

Row 6 (WS): k4, p13, k2, p13, k4

Row 7 (RS): k13, k3tog, yo, k1, yo, p2, yo, k1, yo, sssk, k13

Row 8 (WS): k4, p13, k2, p13, k4

Row 9: k12, k3tog, yo, k1, yo, k1, p2, k1, yo, k1, yo, sssk, k12

Row 10: k4, p13, k2, p13, k4

Row 11: k11, k3tog, yo, k1, yo, k2, p2, k2, yo, k1, yo, sssk, k11

Row 12: k4, p13, k2, p13, k4

Row 13: k10, k3tog, yo, k1, yo, k3, p2, k3, yo, k1, yo, sssk, k10

Row 14: k4, p13, k2, p13, k4

Row 15: k9, k3tog, yo, k1, yo, k4, p2, k4, yo, k1, yo, sssk, k9

Row 16: k4, p13, k2, p13, k4

Row 17: k13, k3tog, yo, k1, yo, p2, yo, k1, yo, sssk, k13

Row 18: k4, p13, k2, p13, k4

Row 19: k12, k3tog, yo, k1, yo, k1, p2, k1, yo, k1, yo, sssk, k12

Row 20: k4, p13, k2, p13, k4

Row 21: k11, k3tog, yo, k1, yo, k2, p2, k2, yo, k1, yo, sssk, k11

Row 22: k4, p13, k2, p13, k4

Row 23: k10, k3tog, yo, k1, yo, k3, p2, k3, yo, k1, yo, sssk, k10

Row 24: k4, p13, k2, p13, k4

Row 25: k9, k3tog, yo, k1, yo, k4, p2, k4, yo, k1, yo, sssk, k9

Row 26: k4, p13, k2, p13, k4

Row 27: k13, k3tog, yo, k1, yo, p2, yo, k1, yo, sssk, k13

Row 28: k4, p13, k2, p13, k4

Row 29: k12, k3tog, yo, k1, yo, k1, p2, k1, yo, k1, yo, sssk, k12

Row 30: k4, p13, k2, p13, k4

Row 31: k11, k3tog, yo, k1, yo, k2, p2, k2, yo, k1, yo, sssk, k11

Row 32: k4, p13, k2, p13, k4

Row 33: k10, k3tog, yo, k1, yo, k3, p2, k3, yo, k1, yo, sssk, k10

Row 34: k4, p13, k2, p13, k4

Row 35: k9, k3tog, yo, k1, yo, k4, p2, k4, yo, k1, yo, sssk, k9

Row 36: k4, p13, k2, p13, k4
Row 37: k13, k3tog, yo, k1, yo, p2, yo, k1, yo, sssk, k13
Row 38: k4, p13, k2, p13, k4
Row 39: k12, k3tog, yo, k1, yo, k1, p2, k1, yo, k1, yo, sssk, k12
Row 40: k4, p13, k2, p13, k4
Row 41: k11, k3tog, yo, k1, yo, k2, p2, k2, yo, k1, yo, sssk, k11
Row 42: k4, p13, k2, p13, k4
Row 43: k10, k3tog, yo, k1, yo, k3, p2, k3, yo, k1, yo, sssk, k10
Row 44: k4, p13, k2, p13, k4
Row 45: k9, k3tog, yo, k1, yo, k4, p2, k4, yo, k1, yo, sssk, k9
Row 46: k4, p13, k2, p13, k4
Row 47: k17, p2, k17
Row 48: k4, p13, k2, p13, k4
Row 49: k36
Row 50: k36
Row 51: k36
Row 52: k36

BO (for optional loop, BO until 4 stitches remain)

Optional Loop:

Continue knitting remaining 4 stitches in garter stitch (knitting on the RS and WS) for 4" – 6". BO and sew edge to WS of work to create a loop.

Weave in ends.

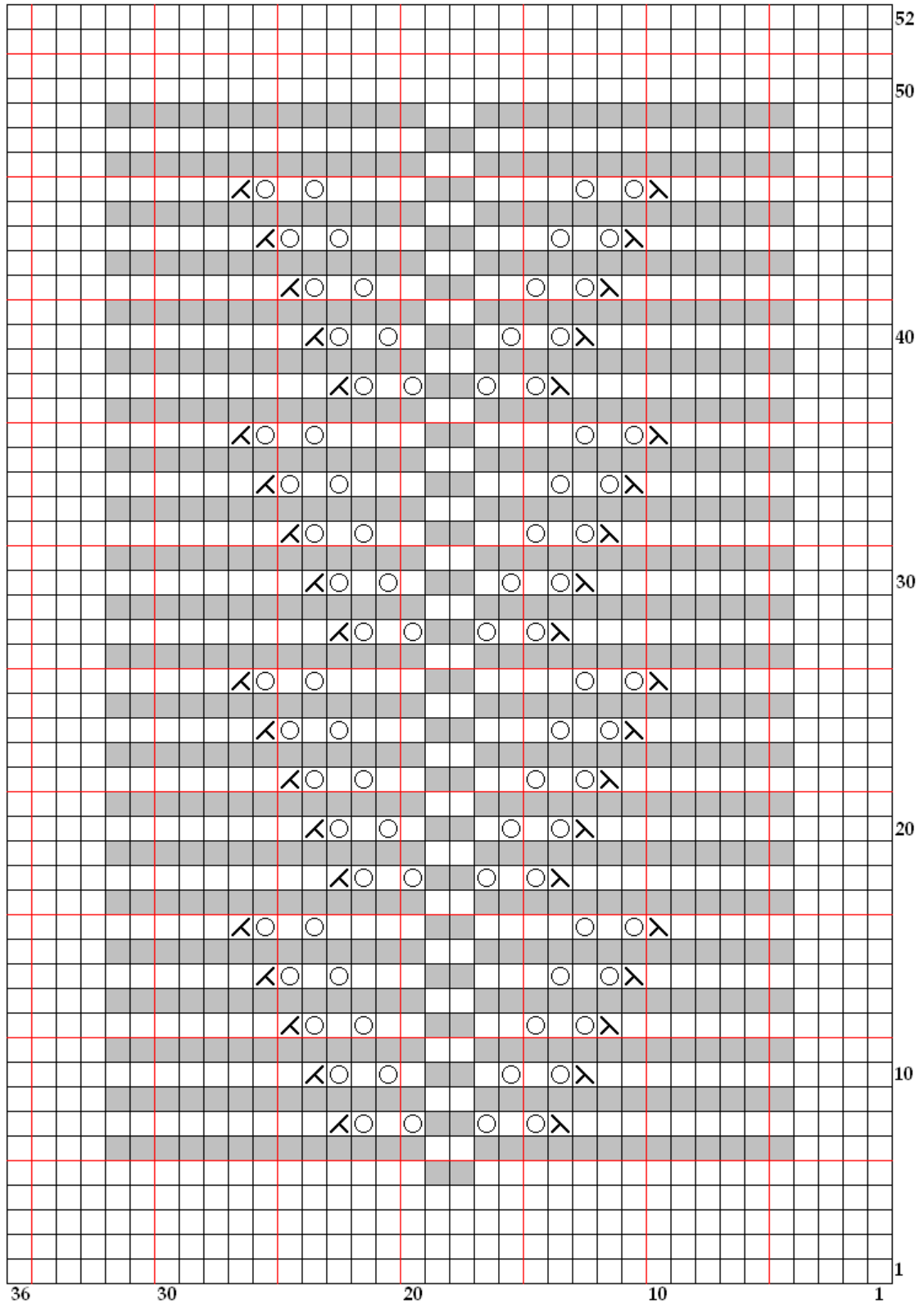
Note: Blocking is not necessary, but bear in mind that the lace pattern does warp the lower and upper edges of the cloth somewhat.

Abbreviations:

k	knit
k3tog	knit three stitches together
p	purl
sssk	slip slip slip knit (sl 1 stitch knitwise, sl 1 stitch knitwise, slip 1 stitch knitwise, insert left needle into three slipped stitches from left to right, k3tog)
yo	yarn over

If you are unfamiliar with any of these techniques, I highly recommend that you view the videos at <http://www.knittinghelp.com>. *Note: k3tog is virtually the same as k2tog with the inclusion of a third stitch. Similarly, sssk is ssk with a third stitch.*

The lace panel in this pattern is a modified version based on panel #409 of *Mon Tricot Knitting Dictionary: 900 Stitches and Patterns*. New York: Crown Publishers, 1971.



k
 P
 yo
 k3tog
 sssk