



# SHADES OF SHETLAND.....

## Designs by Anne Featonby

Ravelry: [fairislefanatic](#)  
e-mail: [featonby@xplornet.com](mailto:featonby@xplornet.com)

# Nordic Sweetheart Hat

Materials: 3 skeins Jamieson's Shetland Spindrift -- main colour (background)  
2 skeins Jamieson's Shetland Spindrift -- pattern colour

Gauge: 7 stitches/inch in two colour stranded knitting  
(Make sure you do your gauge swatch!)

Needles: 3.75 mm 16" circular needle  
3.75 double pointed needles  
or size necessary to obtain gauge

Sizes: Medium 20.5", Large 22.25"

**Please read the pattern thoroughly before proceeding. This written description will help you knit from the chart on page 3.**

Cast on (144/156) stitches with an invisible cast on using the main colour. *Don't know how to cast on invisibly? -- here's my favourite method!*

Invisible Cast On Using a Crochet Hook -- using a nice silky cotton yarn, use a crochet hook to make a chain the number of stitches you require + 8-10 chains!

Look at your crochet chain and you'll see that it has two sides -- the one that looks like the V of stocking stitch. and on the back the purl bump side! Look at your chain and knit into the purl bumps -- knitting on your 144 stitches -- leaving a couple of chains at the start, and at the end of your knitting.

Hold your circular needle in a circle -- ensuring that your stitches and the crochet chain are not twisted -- with the crochet chain on the inside of the circle leaving the stitches around the needle.

Joining your stitches together to knit in the round, knit a few (at least 6) rounds using your background colour to establish your knitting, and get your tension on gauge. Mark the start of your round with a pin, a loop of yarn, or knitting marker of your choice!

Join in your contrasting colour, and proceed to knit Chart A1. Start from the bottom, and read each row of the chart from right to left. Each pattern should repeat evenly on each row. This is a 2 stitch repeat, so it does repeat evenly.

Knit two rounds using the main colour (background colour)

Knit Chart A2. Again reading the chart from the bottom and from right to left. If you are knitting the medium size -- use the 24 stitch repeat. (If you are knitting the large size, use the 26 stitch repeat -- adding the 2 stitches to the right of the dotted line.)

Knit two rounds using the main colour (background colour)

Repeat Chart A1 as before.

Using the main colour, knit one round, then purl one round (this defines the fold line for the brim of your hat).

Knit two more rounds using the main colour.

Repeat Charts A1 and A2 again as above. (You need to do two sections of Charts A to make both sides of the folded up brim the same -- that way you can wear the hat folded up and you'll have four layers of knitting over your ears, or with the brim folded down as a toque!)

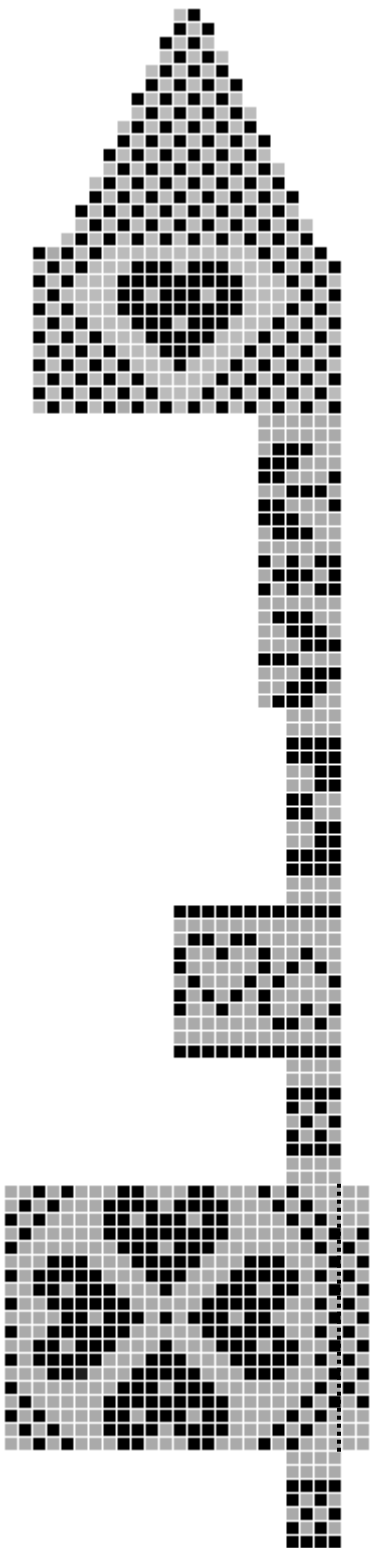
Continue to follow the pattern, decreasing on rows as indicated for medium or large sizes. Go from your circular needle to your double pointed needles when necessary.

When you have completed the pattern, you will have 12 stitches left on your needles. Cut both of your yarns off at 18" length, and thread through the last 12 stitches -- pass your needle through a couple of times to hold the top of your hat closed, and leave the remainder of yarn hanging (for your tassel cord). I made my tassel by wrapping both yarns around my address book (which is about 4" tall) 50 wraps to make my tassel. I used the threads left at the top of the hat -- twisted and folded over twice to make my tassel cord -- forming the tassel over the cord and using a separate piece of yarn to secure the tassel. Use a sharp pointed needle to secure the yarns.

Take your invisible cast on, release your chain, and you will have live stitches to pick up and continue knitting on! You might want to rip back a couple of rows until your stitches are more even. Establish your stitches on the circular needle, and following the same number of rows (and decrease rows) as on the patterned hat, continue to knit your inner hat in the main colour. (If you have made your tassel already, you can put stripes of your pattern colour here and there for interest if you'd like.) Once you have finished the body of the hat -- the top of this inner hat does not need to be shaped like the outside hat if you don't want to fiddle again -- just decrease one stitch every six stitches on alternate rounds until you have a small number of stitches left (again changing to double-pointed needles when required) and seal the end using yarn and a sharp pointed needle!

Fold your hat on the purl fold line -- you can wear it this way as a toque, or fold up your hat brim and you've got a great hat to keep your ears warm!

Enjoy,



29 rows, 22 stitch repeat

(M&L) Decrease 6 stitches evenly around the second main colour row between patterns.

Chart D, 19 Rows, 6 stitch repeat

(M&L) Decrease 6 stitches evenly around the second main colour row between patterns.

Chart C, 10 rows, 4 stitch repeat

(L only) Decrease 6 stitches evenly around the second main colour row between patterns.

Chart B, 11 rows, 12 stitch repeat

2 rows main colour

Chart A1, 5 rows, 2 stitch repeat

2 rows main colour

Chart A2, 19 rows, 24 stitch repeat (Medium) or 26 stitch repeat (Large)

2 rows main colour

Chart A1, 5 rows, 2 stitch repeat