

MESI

by Suvi S.

<http://50villapeikko.blogspot.com/>



This hat includes traditional honeycomb pattern and a bit of stranded knitting on top. It's an easy and quick knit and you can have fun experimenting with different colors. You can use solid colors, or even variegated or self-striping yarns with solid ones.

MEASUREMENTS:

Hat circumference: about 20-21" (51-53 cm), the fabric is very stretchy and the hat fits comfortably an adult 22" (56 cm) head.
Height: 8" (20 cm), almost covers the ears

MATERIALS:

Yarn: Sublime Extra Fine Merino Wool DK [100% merino wool, 127 yds (116 m)/50g], in two colors, 1 skein each

Needles: US 4 (3,5 mm) circulars and/or double pointed needles

Notions: tapestry needle for hiding the yarn ends, stitch marker, row counter

PATTERN NOTES:

Charts are 30 sts wide and are repeated 4 times per round (4x30sts=120sts).

Stitch patterns:

Twisted rib: *k1tbl, p1* repeat around

Honeycomb pattern, (see chart A):

Rnds 1-5: *k4 with CC, slip 2 purlwise* repeat around

Rnd 6: knit with MC

Rnds 7-8: purl with MC

Rnds 9-13: k1 with CC, slip 2 purlwise, *k4 with CC, slip 2 purlwise* repeat until 3 sts remain, k3 with CC

Rnd 14: knit with MC
Rnds 15-16: purl with MC

ABBREVIATIONS:

k - knit
p- purl
st - stitch
sts - stitches
rnd - round
rnds - rounds
MC - main color
CC - contrasting color
tbl - through the back loop
ssk - slip slip knit decrease
k2tog - knit 2 stitches together

INSTRUCTIONS:

Using MC, cast on 120 sts. Join for knitting in the round, being careful not to twist your work and place a marker at the beginning of round

Work in twisted rib for 1" (2,5 cm)

Knit one round

Join CC and repeat rounds 1-16 from chart A total of 3 times, then repeat rounds 1-13 once more.

Top decreases:

Change the beginning of round like follows: remove marker, with MC k2, put the marker back. This is the new beginning of round.

Work chart B (decreases are included in chart). Gray boxes show the decreased stitches, also called "no stitch". 8 sts remaining after chart B is completed.

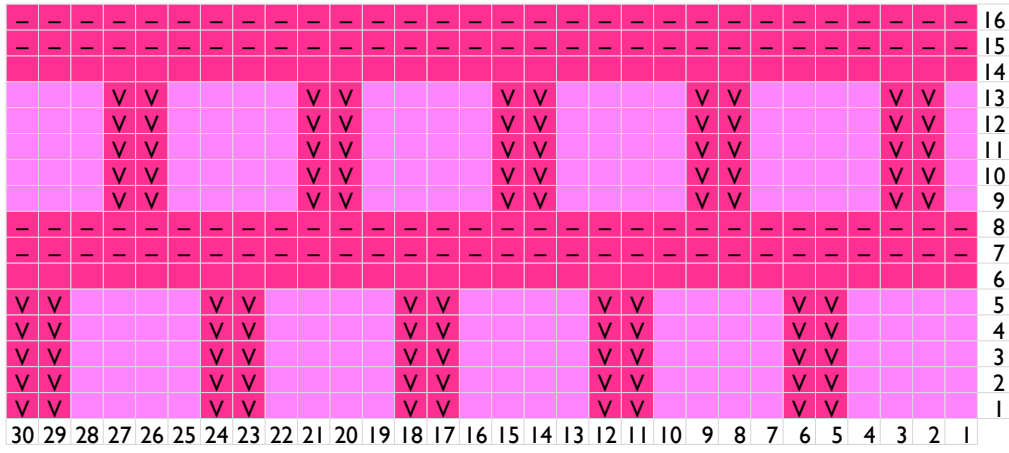
Break both yarns. Hide CC inside the hat, place MC on the needle and pull through the remaining stitches. Fasten off to the wrong side.

FINISHING:

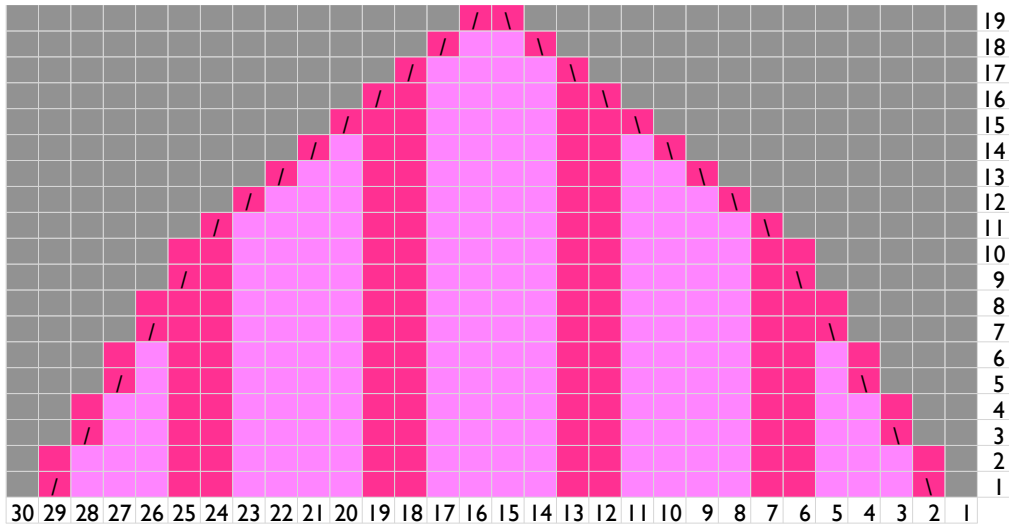
Wave in the ends, block lightly.

If you have questions about this pattern, contact me at villapeikko@yahoo.com
This pattern is for personal use only, you may not sell it nor create items for sale.

C H A R T A



C H A R T B



- (gray) no stitch
- (pink) MC
- (light pink) CC
- \ ssk
- / k2tog
- V slipped stitch
- purl